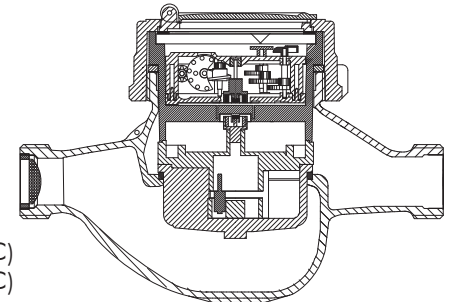


BAYLAN

WATER METERS

VK-7

Volumetric Water Meter



GENERAL

- MID Certified
- Volumetric principle assures very high sensitivity even at low flow
- Suitable for potable water
- Very good sensitivity in initial starting
- Special glass with high resistance to pressure and impact
- Electrostatic painted body made of corrosion resistant brass
- Protection against external magnetic fields
- Pulse output and AMR reading features are optional
- Suitable for cold water up to 50°C
- Almost no maintenance
- 360° rotating lid
- Service and spare parts available for 10 years
- 3 years of warranty
- IP68 Protected
- Environmental Classes

Climatic : -10°C/+55°C | Mechanic: M1/O | Elektromagnetic: E2

- Q2 ≤ Q ≤ Q4 Maximum Permissible Error

Class 2 Water Meters; %±2 (Water Temp. ≤ 30°C), %±3 (Water Temp. > 30°C)

Class 1 Water Meters; %±1 (Water Temp. ≤ 30°C), %±2 (Water Temp. > 30°C)

- Q1 ≤ Q < Q2 Maximum Permissible Error

Class 2 Water Meters; % ± 5 | Class 1 Water Meters; % ± 3

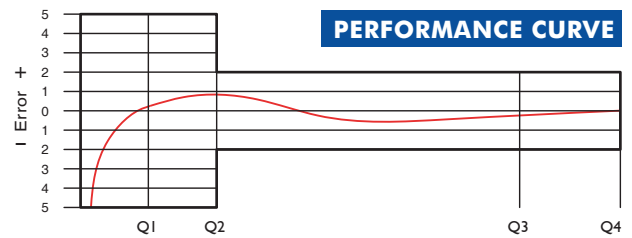


PERFORMANCE DATA

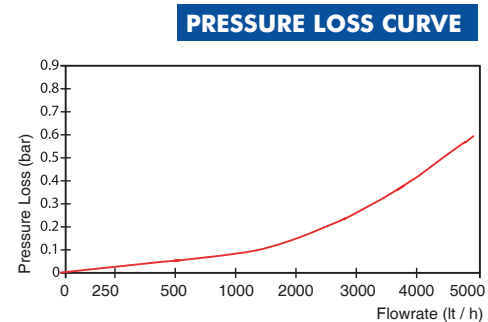
| | | | |
|-----------------------------|-------------------|-------------------|---------------|
| Overload Flowrate | Q4 | m ³ /h | 5 |
| Permanent Flowrate | Q3 | m ³ /h | 4 |
| Transitional Flowrate | Q2 | m ³ /h | 0,020 |
| Minimum Flowrate | Q1 | m ³ /h | 0,0127 |
| Q3/Q1 (MI-001 OIML R49) | - | | ≤315 |
| Mounting on the network | - | | All Positions |
| Initial Flow | Qi | l/h | 1 |
| Maximum Working Pressure | bar | | 16 |
| Maximum Working Temp. | °C | | 50 |
| Pressure Loss Class | bar | | 0,63 |
| Maximum Registration Cap. | m ³ /h | | 99999 |
| Smallest Reading Resolution | m ³ /h | | 0,00005 |

DIMENSIONS

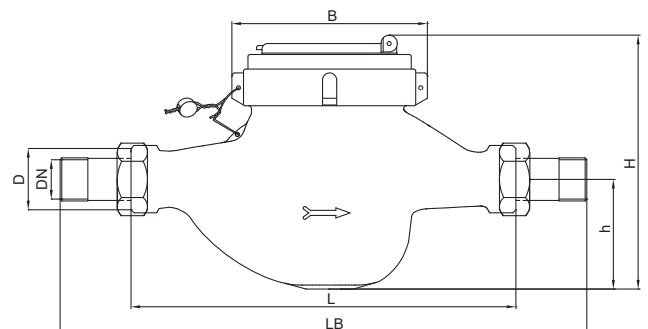
| | | | |
|----------------------------------|----|----------|-----|
| Nominal diameter | DN | 20 | mm |
| Connecting diameter | D | G 1 | B |
| Total overall meter height | H | 132 | mm |
| Axis height | h | 48,9 | mm |
| Length | L | 190 | mm |
| Width | B | 98 | mm |
| Length with connections | LB | 270 | mm |
| Unit weight | | 1,57 | kg |
| Package Weight (without connect) | | 8,50 | kg |
| Package Weight (with connect) | | 9,45 | kg |
| Quantity per package | | 5 | pcs |
| Package dimensions | | 16x54x23 | cm |



PERFORMANCE CURVE



PRESSURE LOSS CURVE



"Due to continuous development of our products, we reserve the right to modify our product design or construction without prior notice."