

# BAYLAN

## WATER METERS

# VK-29P

## Volumetric Water Meter

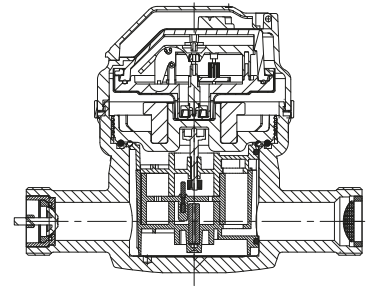


### GENERAL

- MID Certified
- Volumetric principle assures very high sensitivity even at low flow
- Suitable for potable water
- Very good sensitivity in initial starting
- Special glass with high resistance to pressure and impact
- Composite body with high resistance to pressure and impacts
- Protection against external magnetic fields
- Available for optical reading
- AMR reading features are optional
- 3 years of warranty • Non return valve
- Suitable for cold water up to 50°C
- Almost no maintenance • 359° rotating dial
- Service and spare parts available for 10 years
- Brass or composite end connection options
- IP68 Protected
- Environmental Classes

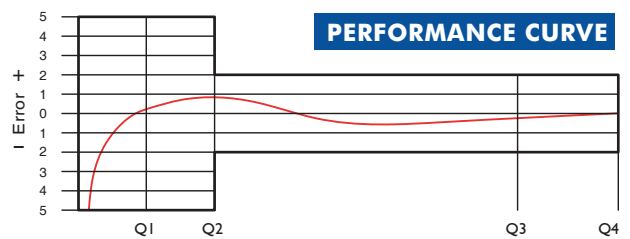
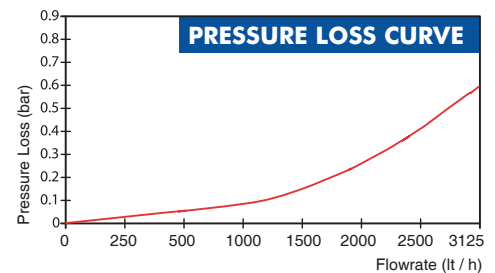
Climatic : -10°C/+55°C | Mechanic: M1/O | Elektromagnetic: E2

- Q2 ≤ Q ≤ Q4 Maximum Permissible Error Class 2 Water Meters; % ± 2 (Water Temp. ≤ 30°C), % ± 3 (Water Temp. > 30°C)
- Class 1 Water Meters; % ± 1 (Water Temp. ≤ 30°C), % ± 2 (Water Temp. > 30°C)
- Q1 ≤ Q < Q2 Maximum Permissible Error Class 2 Water Meters; % ± 5 | Class 1 Water Meters; % ± 3



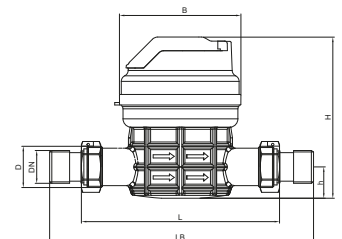
### PERFORMANCE DATA

Overload Flowrate	Q4	m <sup>3</sup> /h	3,125
Permanent Flowrate	Q3	m <sup>3</sup> /h	2,500
Transitional Flowrate	Q2	m <sup>3</sup> /h	0,01
Minimum Flowrate	Q1	m <sup>3</sup> /h	0,00625
Q3/Q1 (MI-001 OIML R49)	-		≤ 400
Maximum Registration Capacity	m <sup>3</sup>	9999 / 99999 / 99999,99 / 99999,999	
Mounting on the network	-	All Positions	
Initial Flow	Qi	l/h	1
Maximum Working Pressure	bar	16	
Maximum Working Temperature	°C	50	
Pressure Loss Class	bar	0,63	
Smallest Reading Resolution	m <sup>3</sup>	0,00005	
Class	-	Class 1 / Class 2	



### DIMENSIONS

Nominal diameter	DN	15	15	20	20	mm
Connecting diameter	D	G 3/4	G 3/4	G 1	G 1	B
Total overall meter height	H	130	130	130	130	mm
Axis height	h	25,3	25,3	25,3	25,3	mm
Width	B	98	98	98	98	mm
Length	L	110   115   130	165   170   190	110   115   130	165   190	mm
Length with connections	LB	190   195   210	245   250   270	190   195   210	245   270	mm
Unit weight		0,52/0,58	0,60/0,66	0,62/0,67	0,63/0,69	kg
Package Weight (without connect.)		6,90	7,50	7,50	8,10	kg
Package Weight (with connect.)		8,50	9,10	9,40	10,0	kg
Quantity per package		10	10	10	10	pcs
Package dimensions		27x49x16	27x48x20	27x49x16	27x48x20	cm



"Due to continuous development of our products, we reserve the right to modify our product design or construction without prior notice."