

BAYLAN

WATER METERS

VK-12

Volumetric Water Meter

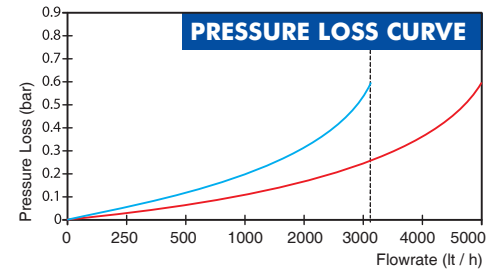
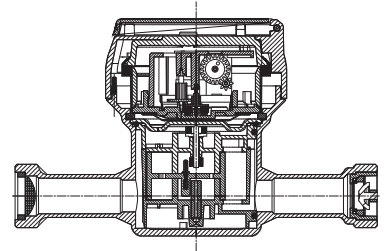


GENERAL

- MID Certified
- Volumetric principle assures very high sensitivity even at low flow
- Suitable for potable water
- Stainless steel register cup
- Very good sensitivity in initial starting
- Special glass with high resistance to pressure and impact
- Electrostatic painted body made of corrosion resistant brass
- Protection against external magnetic fields
- Available for optical reading
- AMR reading features are optional
- 3 years of warranty • Non return valve
- Suitable for cold water up to 50°C
- Almost no maintenance • 359° rotating dial
- Service and spare parts available for 10 years
- IP68 Protected
- Environmental Classes

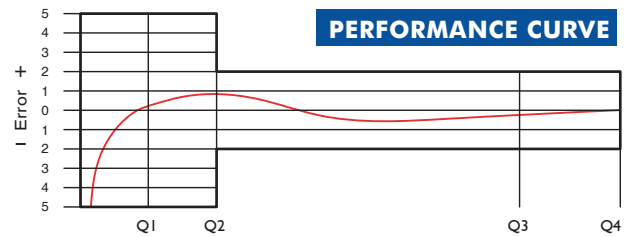
Climatic : -10°C/+55°C | Mechanic: M1/O | Elektromagnetic: E2

- $Q2 \leq Q \leq Q4$ Maximum Permissible Error
Class 2 Water Meters; $\% \pm 2$ (Water Temp. $\leq 30^\circ\text{C}$), $\% \pm 3$ (Water Temp. $> 30^\circ\text{C}$)
- $Q1 \leq Q < Q2$ Maximum Permissible Error
Class 1 Water Meters; $\% \pm 1$ (Water Temp. $\leq 30^\circ\text{C}$), $\% \pm 2$ (Water Temp. $> 30^\circ\text{C}$)
- $Q1 \leq Q < Q2$ Maximum Permissible Error
Class 2 Water Meters; $\% \pm 5$ | Class 1 Water Meters; $\% \pm 3$



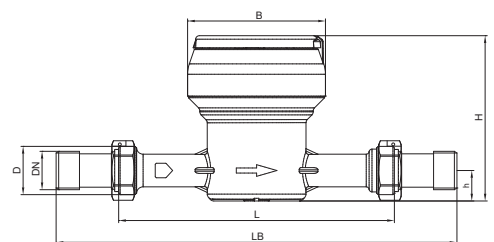
PERFORMANCE DATA

Nominal diameter	DN	15/20	20 (L:190mm)
Overload Flowrate	Q4	m³/h 3,125	5
Permanent Flowrate	Q3	m³/h 2,500	4
Transitional Flowrate	Q2	m³/h 0,005	0,0256
Minimum Flowrate	Q1	m³/h 0,003125	0,016
Q3/Q1 (MI-001 OIML R49)	-	≤ 800	≤ 250
Maximum Registration Capacity	m³	9999 / 99999 / 99999,99 / 99999,999	
Mounting on the network	-	All Positions	
Initial Flow	Qi	l/h 1	
Maximum Working Pressure	bar	16	
Maximum Working Temperature	°C	50	
Pressure Loss Class	bar	0,63	
Smallest Reading Resolution	m³	0,00005	
Class	-	Class 1 / Class 2	



DIMENSIONS

Nominal diameter	DN	15	15	20	20	mm
Connecting diameter	D	G 3/4	G 3/4	G 1	G 1	B
Total overall meter height	H	114	114	114	126	mm
Axis height	h	21	21	21	26,5	mm
Width	B	95	95	95	98	mm
Length	L	110 130	165 170	110 130	190	mm
Length with connections	LB	190 210	245 250	190 210	270	mm
Unit weight		0,84/0,90	0,97/1,03	0,84/0,90	0,97/1,03	kg
Package Weight (without connect.)		9,70	11,00	9,70	12,00	kg
Package Weight (with connect.)		11,30	12,60	11,60	13,90	kg
Quantity per package		10	10	10	10	pcs.
Package dimensions		27x49x16	27x48x20	27x49x16	27x48x20	cm



"Due to continuous development of our products, we reserve the right to modify our product design or construction without prior notice."