

BAYLAN

WATER METERS

VK-11P

Volumetric Water Meter



GENERAL

- MID Certified
- Volumetric principle assures very high sensitivity even at low flow
- Suitable for potable water
- Very good sensitivity in initial starting
- Special glass with high resistance to pressure and impact
- Composite body with high resistance to pressure and impacts
- Protection against external magnetic fields
- Available for optical reading
- AMR reading features are optional
- 3 years of warranty • Non return valve
- Suitable for cold water up to 50°C
- Almost no maintenance • 359° rotating dial
- Service and spare parts available for 10 years
- Brass or composite end connection options
- IP68 Protected
- Environmental Classes

Climatic : -10°C/+55°C | Mechanic: M1/O | Elektromagnetic: E2

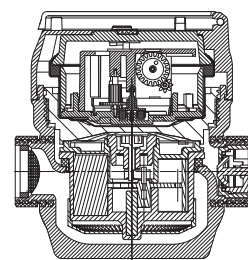
- $Q2 \leq Q \leq Q4$ Maximum Permissible Error

Class 2 Water Meters; $\% \pm 2$ (Water Temp. $\leq 30^\circ\text{C}$), $\% \pm 3$ (Water Temp. $> 30^\circ\text{C}$)

Class 1 Water Meters; $\% \pm 1$ (Water Temp. $\leq 30^\circ\text{C}$), $\% \pm 2$ (Water Temp. $> 30^\circ\text{C}$)

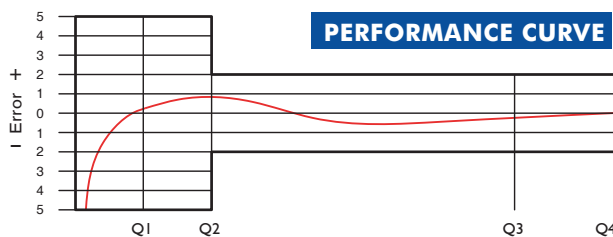
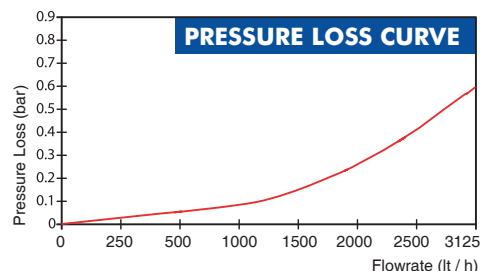
- $Q1 \leq Q < Q2$ Maximum Permissible Error

Class 2 Water Meters; $\% \pm 5$ | Class 1 Water Meters; $\% \pm 3$



PERFORMANCE DATA

Overload Flowrate	Q4	m³/h	3,125
Permanent Flowrate	Q3	m³/h	2,500
Transitional Flowrate	Q2	m³/h	0,008
Minimum Flowrate	Q1	m³/h	0,005
Q3/Q1 (MI-001 OIML R49)	-		≤ 500
Maximum Registration Capacity	m³		9999 / 99999 / 99999,99 / 99999,999
Mounting on the network	-		All Positions
Initial Flow	Qi	l/h	1
Maximum Working Pressure	bar		16
Maximum Working Temperature	°C		50
Pressure Loss Class	bar		0,63
Smallest Reading Resolution	m³		0,00005
Class	-		Class 1 / Class 2



DIMENSIONS

Nominal diameter	DN	15	20	mm
Connecting diameter	D	G 3/4	G 1	B
Total overall meter height	H	118,4	118,4	mm
Axis height	h	41	41	mm
Width	B	95	95	mm
Length	L	110 115	110 115	mm
Length with connections	LB	190 195	190 195	mm
Unit weight		0,58	0,65	kg
Package Weight (without connect.)		6,90	7,50	kg
Package Weight (with connect.)		8,50	9,10	kg
Quantity per package		10	10	pcs.
Package dimensions		27x49x16	27x49x16	cm

