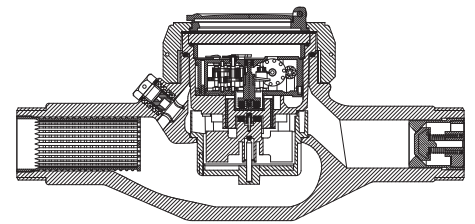


BAYLAN

WATER METERS

TK-3P

Multi jet Dry type Water Meter

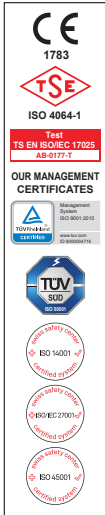


GENERAL

- MID Certified
- Multi jet working principle assures a long service time
- Low pressure loss, high sensitivity at initial flow
- 360° rotating lid • Non return valve
- Vacuumed and magnet protected mechanism
- Special glass with high resistance to pressure and impact
- Composite body with high resistance to pressure and impacts
- Protection against external magnetic fields
- Available for optical reading • Almost no maintenance
- Pulse output and AMR reading features are optional
- 3 years of warranty • Suitable for potable water
- Suitable for cold water up to 50°C
- Stainless steel register cup is optional
- Service and spare parts available for 10 years
- Brass or composite end connection options
- IP68 Protected
- Environmental Classes

Climatic : -10°C/+55°C | Mechanic: M1/O | Elektromagnetic: E2

- $Q2 \leq Q \leq Q4$ Maximum Permissible Error
- Class 2 Water Meters; $\% \pm 2$ (Water Temp. $\leq 30^\circ\text{C}$), $\% \pm 3$ (Water Temp. $> 30^\circ\text{C}$)
- Class 1 Water Meters; $\% \pm 1$ (Water Temp. $\leq 30^\circ\text{C}$), $\% \pm 2$ (Water Temp. $> 30^\circ\text{C}$)
- $Q1 \leq Q < Q2$ Maximum Permissible Error
- Class 2 Water Meters; $\% \pm 5$ | Class 1 Water Meters; $\% \pm 3$



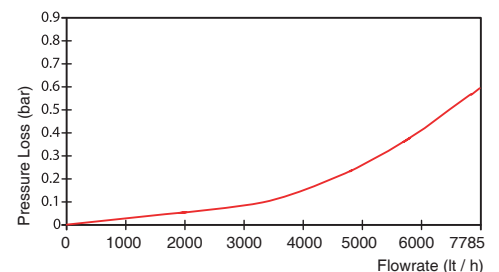
PERFORMANCE DATA

Overload Flowrate	Q4	m ³ /h	7,875
Permanent Flowrate	Q3	m ³ /h	6,3
Transitional Flowrate	Q2	m ³ /h	0,0504
Minimum Flowrate	Q1	m ³ /h	0,0315
Q3/Q1 (MI-001 OIML R49)			≤ 200
Mounting on the network			Horizontal
Maximum Registration Capacity			99999 / 99999,99 / 99999,999
Initial Flowrate	Qi	l/h	7
Maximum Working Pressure		bar	16
Maximum Working Temperature		°C	50
Pressure Loss Class		bar	0,63
Smallest Reading Resolution		m ³	0,00005
Class			Class 1 / Class 2
Quantity per package			10

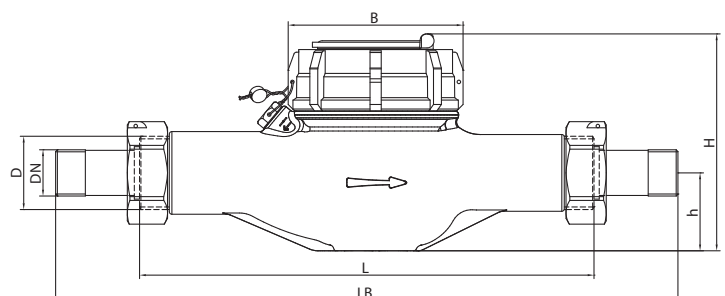
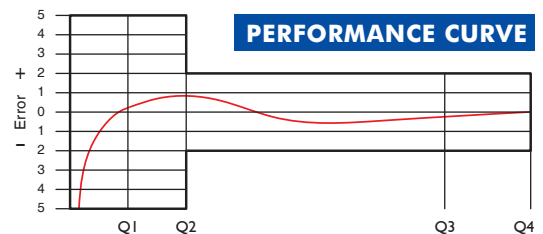
DIMENSIONS

Nominal diameter	DN	25	mm
Connecting diameter	D	G1 1/4	B
Total overall meter height	H	124	mm
Axis height	h	44,5	mm
Length	L	260	mm
Width	B	101	mm
Length with connections	LB	380	mm
Unit weight		0,94	kg
Package Weight (without connect)		10,60	kg
Package Weight (with connect)		11,60	kg
Package dimensions		26x52x30	cm

PRESSURE LOSS CURVE



PERFORMANCE CURVE



"Due to continuous development of our products, we reserve the right to modify our product design or construction without prior notice."