

BAYLAN

WATER METERS

TK-29P

Multi jet Dry type Water Meter



GENERAL

- MID Certified
- Suitable for potable water • 359° rotating dial
- Multi jet working principle assures a long service time
- Low pressure loss, high sensitivity at initial flow
- Vacuumed mechanism
- Special glass against for impact and pressure
- Composite body with high resistance to pressure and impacts
- Protection against external magnetic fields
- For optical reading • Non return valve
- AMR reading features are optional
- 3 years of warranty • Almost no maintenance
- Suitable for cold water up to 50°C
- Service and spare parts available for 10 years
- Brass or composite end connection options
- IP68 Protected
- Environmental Classes

Climatic : -10°C/+55°C | Mechanic: M1/O | Elektromagnetic: E2

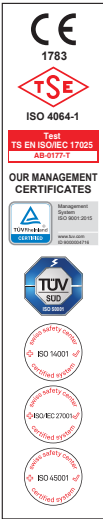
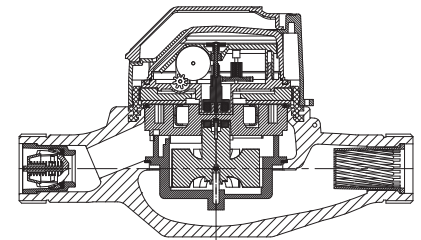
- $Q2 \leq Q \leq Q4$ Maximum Permissible Error

Class 2 Water Meters; $\% \pm 2$ (Water Temp. $\leq 30^\circ\text{C}$), $\% \pm 3$ (Water Temp. $> 30^\circ\text{C}$)

Class 1 Water Meters; $\% \pm 1$ (Water Temp. $\leq 30^\circ\text{C}$), $\% \pm 2$ (Water Temp. $> 30^\circ\text{C}$)

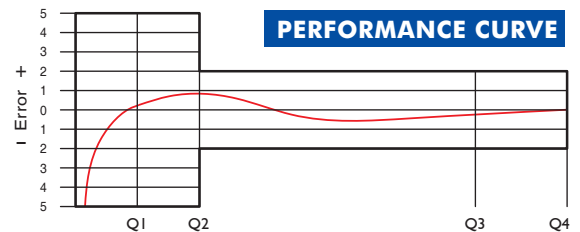
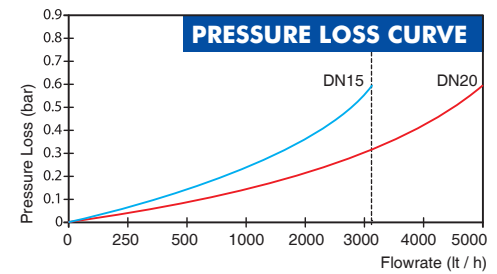
- $Q1 \leq Q < Q2$ Maximum Permissible Error

Class 2 Water Meters; $\% \pm 5$ | Class 1 Water Meters; $\% \pm 3$



PERFORMANCE DATA

Nominal diameter	DN	15 / 20	20
Overload Flowrate	Q4	m ³ /h 3,125	5
Permanent Flowrate	Q3	m ³ /h 2,5	4
Transitional Flowrate	Q2	m ³ /h 0,0200 0,1	0,032 0,16
Minimum Flowrate	Q1	m ³ /h 0,0125 0,0625	0,020 0,1
Q3/Q1 (MI-001 OIML R49)	-	$\leq 200 \leq 40$	$\leq 200 \leq 40$
Mounting on the network	-	H V	H V
Maximum Registration Capacity	m ³	9999 / 99999 / 99999,99 / 99999,999	
Initial Flow	Qi	l/h 4	
Maximum Working Pressure	bar	16	
Maximum Working Temperature	°C	50	
Pressure Loss Class	bar	0,63	
Smallest Reading Resolution	m ³	0.00005	
Class	-	Class 1 / Class 2	
Quantity per package	-	10	



DIMENSIONS

Nominal diameter	DN	15	20	mm
Connecting diameter	D	G 3/4	G 1	B
Total overall meter height	H	110,3	111	mm
Axis height	h	32,2	32,8	mm
Length	L	190	190	mm
Length with connections	LB	270	270	mm
Width	B	90,4	90,4	mm
Unit weight		0,60	0,62	kg
Package Weight (without connect)		6,80	7,00	kg
Package Weight (with connect)		7,30	7,80	kg
Package dimensions		27x48,5x20	27x48,5x20	cm

