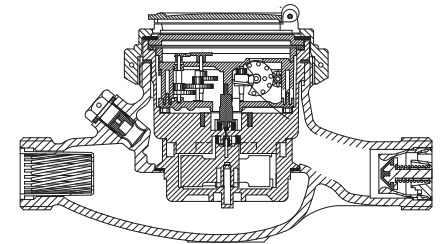


BAYLAN

WATER METERS

TK-25D

Multi jet Dry type Water Meter



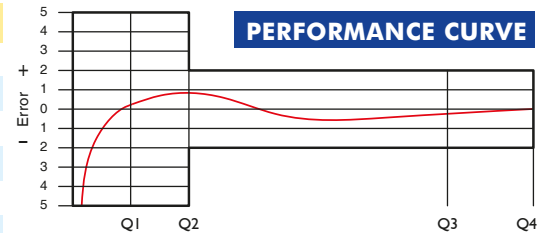
GENERAL

- MID Certified
 - Multi jet working principle assures a long service time
 - Suitable for potable water
 - 360° rotating lid
 - Low pressure loss, high sensitivity at initial flow
 - Vacuumed mechanism • Protection against magnetic effects
 - Electrostatic painted body made of corrosion resistant brass
 - Protection against external magnetic fields
 - Available for optical reading • Non return valve
 - Pulse output and AMR reading features are optional
 - 3 years of warranty • Almost no maintenance
 - Suitable for cold water up to 50°C
 - Service and spare parts available for 10 years
 - IP68 Protected
 - Environmental Classes
- Climatic : -10°C/+55°C | Mechanic: M1/O | Elektromagnetic: E2
- $Q2 \leq Q \leq Q4$ Maximum Permissible Error
- Class 2 Water Meters; $\% \pm 2$ (Water Temp. $\leq 30^\circ\text{C}$), $\% \pm 3$ (Water Temp. $> 30^\circ\text{C}$)
 Class 1 Water Meters; $\% \pm 1$ (Water Temp. $\leq 30^\circ\text{C}$), $\% \pm 2$ (Water Temp. $> 30^\circ\text{C}$)
- $Q1 \leq Q < Q2$ Maximum Permissible Error
- Class 2 Water Meters; $\% \pm 5$ | Class 1 Water Meters; $\% \pm 3$

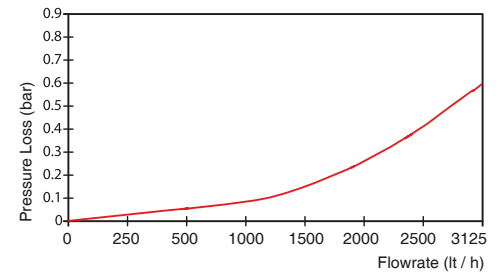


PERFORMANCE DATA

Overload Flowrate	Q4	m ³ /h	3,125
Permanent Flowrate	Q3	m ³ /h	2,5
Transitional Flowrate	Q2	m ³ /h	0,02
Minimum Flowrate	Q1	m ³ /h	0,0125
Q3/Q1 (MI-001 OIML R49)	-		≤ 200
Mounting on the network	-		Horizontal
Maximum Registration Capacity	m ³		9999/99999/99999,99/99999,999
Initial Flowrate	Qi	l/h	7
Maximum Working Pressure	bar		16
Maximum Working Temperature	°C		50
Pressure Loss Class	bar		0,63
Smallest Reading Resolution	m ³		0,00005
Class	-		Class 1 / Class 2
Quantity per package	-		10
Package dimensions	cm		25x46,5x22

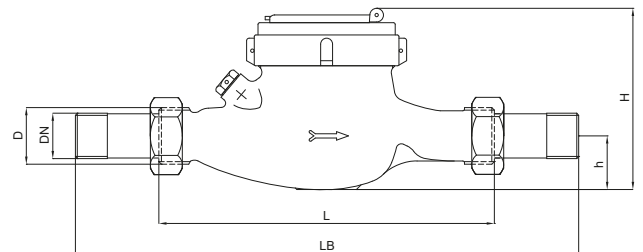


PRESSURE LOSS CURVE



DIMENSIONS

Nominal diameter	DN	15	20	mm	
Connecting diameter	D	G 3/4	G 1	B	
Total overall meter height	H	117	113,4	mm	
Axis height	h	33	31,5	mm	
Length	L	165	170	190	mm
Length with connections	LB	245	250	280	mm
Width	B	93	92	mm	
Unit weight		1,16	1,13	kg	
Package Weight (without connect)		12,27	12,00	kg	
Package Weight (with connect)		13,87	13,90	kg	



"Due to continuous development of our products, we reserve the right to modify our product design or construction without prior notice."