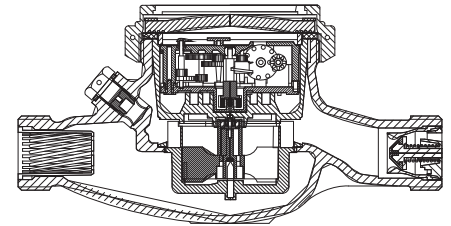


# BAYLAN

## WATER METERS

# TK-1C

## Multi jet Dry type Water Meter



### GENERAL

- MID Certified • Impeller chamber strainer (Optional)
- Multi jet working principle assures a long service time
- Suitable for potable water
- Low pressure loss, high sensitivity at initial flow
- Special glass with high resistance to pressure and impact
- Electrostatic painted body made of corrosion resistant brass
- Protection against external magnetic fields
- Available for optical reading • 360° rotating lid
- Pulse output and AMR reading features are optional
- 3 years of warranty • Non return valve
- Suitable for cold water up to 50°C
- Stainless steel register cup is optional
- Almost no maintenance • Vacuumed mechanism
- Service and spare parts available for 10 years
- IP68 Protected
- Environmental Classes

Climatic : -10°C/+55°C | Mechanic: M1/O | Elektromagnetic: E2

• Q2 ≤ Q ≤ Q4 Maximum Permissible Error

Class 2 Water Meters; %±2 (Water Temp. ≤30°C), %±3 (Water Temp. >30°C)

Class 1 Water Meters; %±1 (Water Temp. ≤30°C), %±2 (Water Temp. >30°C)

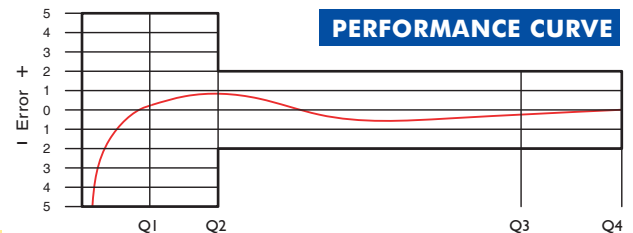
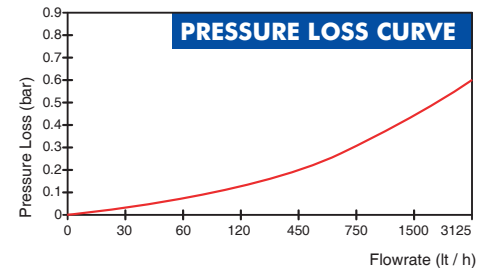
• Q1 ≤ Q < Q2 Maximum Permissible Error

Class 2 Water Meters; % ± 5 | Class 1 Water Meters; % ± 3



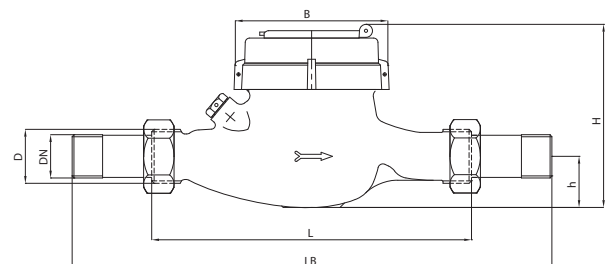
### PERFORMANCE DATA

Nominal diameter	DN	15	20
Overload Flowrate	Q4	m³/h 3,125	3,125
Permanent Flowrate	Q3	m³/h 2,5	2,5
Transitional Flowrate	Q2	m³/h 0,02   0,1	0,02
Minimum Flowrate	Q1	m³/h 0,0125   0,0625	0,0125
Q3/Q1 (MI-001 OIML R49)		≤200   ≤40	≤200
Mounting on the network		H   V	H
Maximum Registration Capacity		9999 / 99999 / 99999,99 / 99999,999	
Initial Flowrate	Qi	l/h 5	
Maximum Working Pressure	bar	16	
Maximum Working Temperature	°C	50	
Pressure Loss Class	bar	0,63	
Smallest Reading Resolution	m³	0,00005	
Class		Class 1 / Class 2	
Quantity per package		10	



### DIMENSIONS

Nominal diameter	DN	15	20	mm
Connecting diameter	D	G 3/4	G 1	B
Total overall meter height	H	109	109	mm
Axis height	h	31,5	31,5	mm
Length	L	190	190	mm
Width	B	97	97	mm
Length with connections	LB	270	270	mm
Unit weight		1,15	1,22	kg
Package Weight (without connect)		12,26	13,00	kg
Package Weight (with connect)		13,86	14,90	kg
Package dimensions		25x46x22	25x46x22	cm



"Due to continuous development of our products, we reserve the right to modify our product design or construction without prior notice."