

BAYLAN

WATER METERS

SD-2P

Multi jet Semi-Dry type Water Meter



GENERAL

- MID Certified
- Multi jet working principle assures a long service time
- Suitable for potable water
- Low pressure loss, high sensitivity at initial flow
- Propylene glycol protected register
- Special glass with high resistance to pressure and impact
- Composite body with high resistance to pressure and impacts
- Available for optical reading
- AMR reading features are optional
- Double filter • Non return valve
- 3 years of warranty • Almost no maintenance
- Suitable for cold water up to 50°C
- Service and spare parts available for 10 years
- Brass or composite end connection options
- IP68 Protected
- Environmental Classes

Climatic : -10°C/+55°C | Mechanic: M1/O | Elektromagnetic: E2

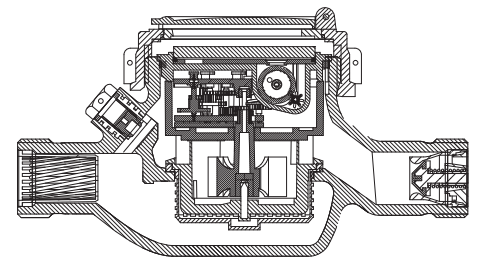
- Q2 ≤ Q ≤ Q4 Maximum Permissible Error

Class 2 Water Meters; %±2 (Water Temp. ≤30°C), %±3 (Water Temp. >30°C)

Class 1 Water Meters; %±1 (Water Temp. ≤30°C), %±2 (Water Temp. >30°C)

- Q1 ≤ Q < Q2 Maximum Permissible Error

Class 2 Water Meters; % ± 5 | Class 1 Water Meters; % ± 3



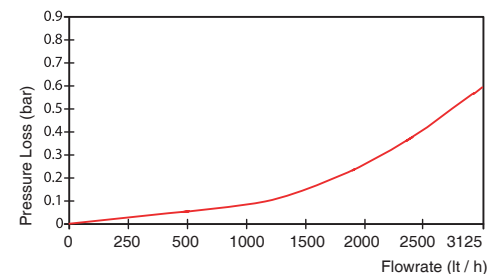
PERFORMANCE DATA

Overload Flowrate	Q4	m³/h	3,125	5	3,125	5
Permanent Flowrate	Q3	m³/h	2,5	4	2,5	4
Transitional Flowrate	Q2	m³/h	0,020	0,032	0,10	0,16
Minimum Flowrate	Q1	m³/h	0,0125	0,020	0,0625	0,10
Q3/Q1 (MI-001 OIML R49)	-		≤200		40	
Mounting on the network	-		H		V	
Maximum Registration Cap.	m³		9999 / 99999 / 99999,99 / 99999,999			
Initial Flow	Qi	l/h	5			
Maximum Working Pressure	bar		16			
Maximum Working Temp.	°C		50			
Pressure Loss Class	bar		0,63			
Smallest Reading Resolution	m³/h		0,00005			
Class	-		Class 1 / Class 2			

DIMENSIONS

Nominal diameter	DN	20	mm
Connecting diameter	D	G 1	B
Total overall meter height	H	117	mm
Axis height	h	37.5	mm
Length	L	190	mm
Width	B	101	mm
Length with connections	LB	270	mm
Unit weight		0,79	kg
Package Weight (without connect)		8,83	kg
Package Weight (with connect)		10,73	kg
Quantity per package		10	pcs
Package dimensions		27x52x22	cm

PRESSURE LOSS CURVE



PERFORMANCE CURVE

