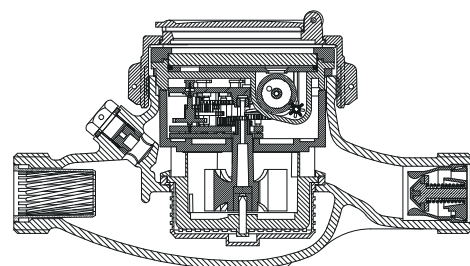


BAYLAN

WATER METERS

SD-2

Multi jet Semi-Dry type Water Meter



GENERAL

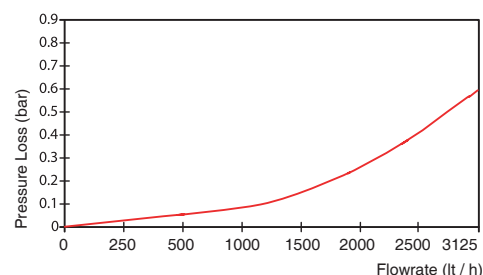
- MID Certified
 - Multi jet working principle assures a long service time
 - Electrostatic painted body made of corrosion resistant brass
 - Suitable for potable water
 - Low pressure loss, high sensitivity at initial flow
 - Propylene glycol protected register
 - Special glass with high resistance to pressure and impact
 - Double filter • Non return valve
 - Available for optical reading
 - AMR reading features are optional
 - 3 years of warranty • Almost no maintenance
 - Suitable for cold water up to 50°C
 - Service and spare parts available for 10 years
 - IP68 Protected
 - Environmental Classes
- Climatic : -10°C/+55°C | Mechanic: M1/O | Elektromagnetic: E2
- $Q_2 \leq Q \leq Q_4$ Maximum Permissible Error Class 2 Water Meters; $\% \pm 2$ (Water Temp. $\leq 30^\circ\text{C}$), $\% \pm 3$ (Water Temp. $> 30^\circ\text{C}$)
 - $Q_1 \leq Q < Q_2$ Maximum Permissible Error Class 1 Water Meters; $\% \pm 1$ (Water Temp. $\leq 30^\circ\text{C}$), $\% \pm 2$ (Water Temp. $> 30^\circ\text{C}$)
 - $Q_1 \leq Q < Q_2$ Maximum Permissible Error Class 2 Water Meters; $\% \pm 5$ | Class 1 Water Meters; $\% \pm 3$



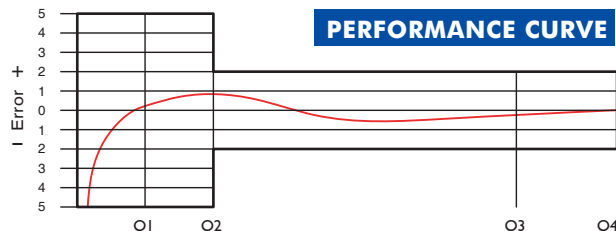
PERFORMANCE DATA

Overload Flowrate	Q4	m ³ /h	3,125	5	3,125	5
Permanent Flowrate	Q3	m ³ /h	2,5	4	2,5	4
Transitional Flowrate	Q2	m ³ /h	0,020	0,032	0,10	0,16
Minimum Flowrate	Q1	m ³ /h	0,0125	0,020	0,0625	0,10
Q3/Q1 (MI-001 OIML R49)	-		≤ 200		40	
Mounting on the network	-		H		V	
Maximum Registration Cap.	m ³		9999 / 99999 / 99999,99 / 99999,999			
Initial Flow	Qi	l/h	5			
Maximum Working Pressure	bar		16			
Maximum Working Temp.	°C		50			
Pressure Loss Class	bar		0,63			
Smallest Reading Resolution Class	m ³ /h		0,00005			
	-		Class 1 / Class 2			

PRESSURE LOSS CURVE

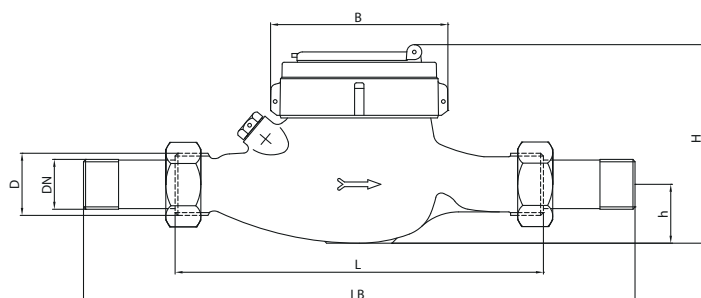


PERFORMANCE CURVE



DIMENSIONS

Nominal diameter	DN	20	mm
Connecting diameter	D	G 1	B
Total overall meter height	H	110	mm
Axis height	h	31,5	mm
Length	L	190	mm
Width	B	95	mm
Length with connections	LB	270	mm
Unit weight		1,23	kg
Package Weight (without connect)		13,09	kg
Package Weight (with connect)		15,00	kg
Quantity per package		10	pcs
Package dimensions		24,5x46x22	cm



"Due to continuous development of our products, we reserve the right to modify our product design or construction without prior notice."