

# BAYLAN

## WATER METERS

### KK-2P

## Single jet Dry type Water Meter

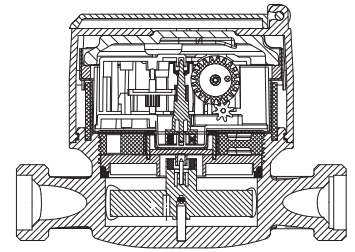


#### GENERAL

- MID Certified
- Single jet design assures very high sensitivity even at low flows
- Suitable for potable water
- Composite body with high resistance to pressure and impacts
- With copper register cup
- Polycarbonate or mineral glass are optional
- Protection against external magnetic fields
- Available for optical reading
- AMR reading features are optional
- 3 years of warranty • 359° rotating dial
- 8 roller register • Vacuumed mechanism
- Suitable for cold water up to 50°C • Almost no maintenance
- Service and spare parts available for 10 years
- IP68 Protected
- Environmental Classes

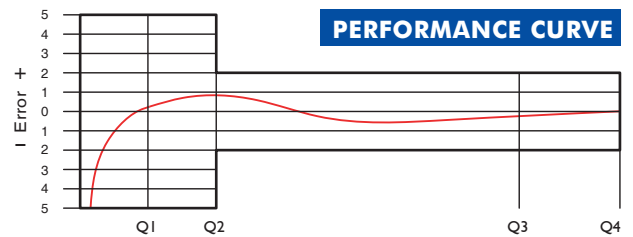
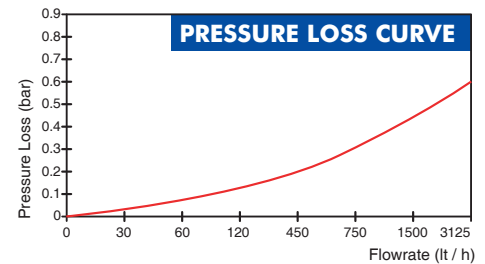
Climatic : -10°C/+55°C | Mechanic: M1/O | Elektromagnetic: E2

- $Q2 \leq Q \leq Q4$  Maximum Permissible Error
- Class 2 Water Meters;  $\% \pm 2$  (Water Temp.  $\leq 30^\circ\text{C}$ ),  $\% \pm 3$  (Water Temp.  $> 30^\circ\text{C}$ )
- Class 1 Water Meters;  $\% \pm 1$  (Water Temp.  $\leq 30^\circ\text{C}$ ),  $\% \pm 2$  (Water Temp.  $> 30^\circ\text{C}$ )
- $Q1 \leq Q < Q2$  Maximum Permissible Error
- Class 2 Water Meters;  $\% \pm 5$  | Class 1 Water Meters;  $\% \pm 3$



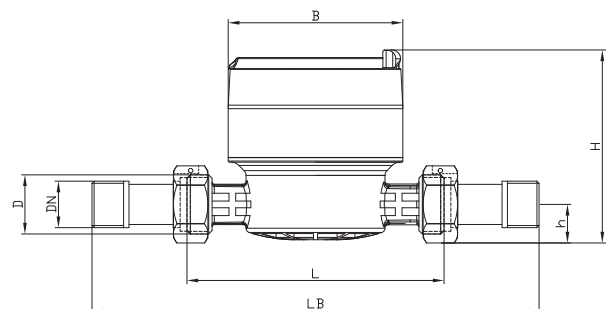
#### PERFORMANCE DATA

|                               |     |                                     |                  |
|-------------------------------|-----|-------------------------------------|------------------|
| Nominal Diameter              | DN  | 15                                  |                  |
| Overload Flowrate             | Q4  | m³/h                                | 3,125            |
| Permanent Flowrate            | Q3  | m³/h                                | 2,5              |
| Transitional Flowrate         | Q2  | m³/h                                | 0,020   0,050    |
| Minimum Flowrate              | Q1  | m³/h                                | 0,0125   0,03125 |
| Q3/Q1 (MI-001 OIML R49)       | -   | $\leq 200$                          | $\leq 80$        |
| Mounting on the network       | -   | H                                   | V                |
| Maximum Registration Capacity | m³  | 9999 / 99999 / 99999,99 / 99999,999 |                  |
| Initial Flow                  | Qi  | l/h                                 | 7                |
| Maximum Working Pressure      | bar | 16                                  |                  |
| Maximum Working Temperature   | °C  | 50                                  |                  |
| Pressure Loss Class           | bar | 0,63                                |                  |
| Smallest Reading Resolution   | m³  | 0,00005                             |                  |
| Class                         | -   | Class 1/Class 2                     |                  |
| Quantity per package          | -   | 10                                  |                  |



#### DIMENSIONS

|                                  |    |             |    |
|----------------------------------|----|-------------|----|
| Nominal diameter                 | DN | 15          | mm |
| Connecting diameter              | D  | G 3/4       | B  |
| Total overall meter height       | H  | 85          | mm |
| Axis height                      | h  | 15,8        | mm |
| Length                           | L  | 110   115   | mm |
| Length with connections          | LB | 190   195   | mm |
| Width                            | B  | 78          | mm |
| Unit weight                      |    | 0,30        | kg |
| Package Weight (without connect) |    | 4,00        | kg |
| Package Weight (with connect)    |    | 6,00        | kg |
| Package dimensions               |    | 21x43x17 cm |    |



"Due to continuous development of our products, we reserve the right to modify our product design or construction without prior notice."