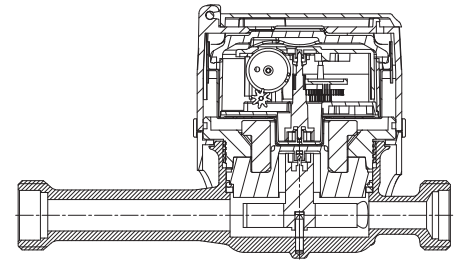


# BAYLAN

## WATER METERS

### KK-2M

## Single jet Dry type Water Meter



#### GENERAL

- MID Certified
- Single jet design assures very high sensitivity even at low flows
- Suitable for potable water
- Electrostatic painted body made of corrosion resistant brass
- With copper register cup • Polycarbonate or mineral glass are optional
- Protection against external magnetic fields
- Available for optical reading • AMR reading features are optional
- 3 years of warranty • 359° rotating dial
- 8 roller register
- Vacuumed mechanism • Suitable for cold water up to 50°C
- Almost no maintenance • Service and spare parts available for 10 years
- IP68 Protected
- Environmental Classes

Climatic : -10°C/+55°C | Mechanic: M1/O | Elektromagnetic: E2

• Q2 ≤ Q ≤ Q4 Maximum Permissible Error

Class 2 Water Meters; % ± 2 (Water Temp. ≤ 30°C), % ± 3 (Water Temp. > 30°C)

Class 1 Water Meters; % ± 1 (Water Temp. ≤ 30°C), % ± 2 (Water Temp. > 30°C)

• Q1 ≤ Q < Q2 Maximum Permissible Error

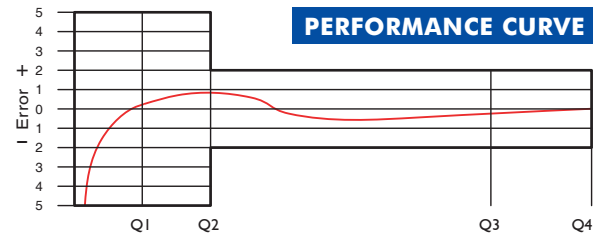
Class 2 Water Meters; % ± 5 | Class 1 Water Meters; % ± 3



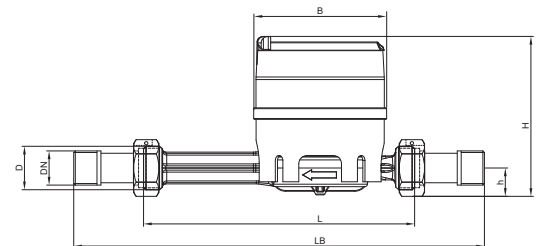
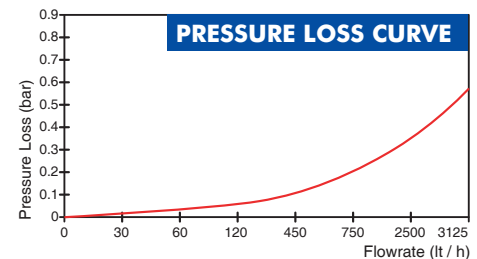
#### PERFORMANCE DATA

Nominal Diameter	DN	15 / 20				
Overload Flowrate	Q4	m³/h	2	3,125		
Permanent Flowrate	Q3	m³/h	1,6	2,5		
Transitional Flowrate	Q2	m³/h	0,016	0,064	0,020	0,08
Minimum Flowrate	Q1	m³/h	0,010	0,04	0,0125	0,05
Q3/Q1 (MI-001 OIML R49)	-		≤ 160	40	≤ 200	≤ 50
Mounting on the network	-		H	V	H	V
Maximum Registration Capacity	m³	99999,999				
Initial Flow	Qi	l/h	5			
Maximum Working Pressure	bar	16				
Maximum Working Temperature	°C	50				
Pressure Loss Class	bar	0,63				
Smallest Reading Resolution	m³	0,00002				
Class	-	Class 1/Class 2				
Quantity per package	-	10				

#### PERFORMANCE CURVE



#### PRESSURE LOSS CURVE



#### DIMENSIONS

Nominal diameter	DN	15	15	20	20	mm								
Connecting diameter	D	G 3/4	G 3/4	G 1	G 1	B								
Total overall meter height	H	98	96	98	96	mm								
Axis height	h	18,3	16,4	18,3	16,4	mm								
Length	L	110	115	130	145	165	170	190	110	115	130	165	190	mm
Length with connections	LB	190	195	210	225	245	250	270	190	195	210	245	270	mm
Width	B	81				mm								
Unit weight		0,61/0,67		0,68/0,74		0,71/0,77		0,85/0,91		kg				
Package Weight (without connect)		7,26		7,90		8,12		9,60		kg				
Package Weight (with connect)		8,86		9,50		10,0		11,50		kg				
Package dimensions		22x43x17		24x47x23		22x43x17		24x47x23		cm				

"Due to continuous development of our products, we reserve the right to modify our product design or construction without prior notice."