

BAYLAN

WATER METERS

KK-2

Single jet Dry type Water Meter

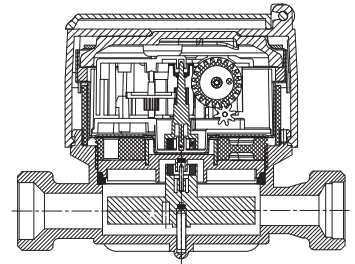


GENERAL

- MID Certified
- Single jet design assures very high sensitivity even at low flows
- Suitable for potable water
- Electrostatic painted body made of corrosion resistant brass
- With copper register cup • Polycarbonate or mineral glass are optional
- Protection against external magnetic fields
- Available for optical reading
- AMR reading features are optional
- 3 years of warranty • 359° rotating dial
- 8 roller register • Wiper on the glass is optional
- Vacuumed mechanism • Suitable for cold water up to 50°C
- Almost no maintenance
- Service and spare parts available for 10 years
- IP68 Protected
- Environmental Classes

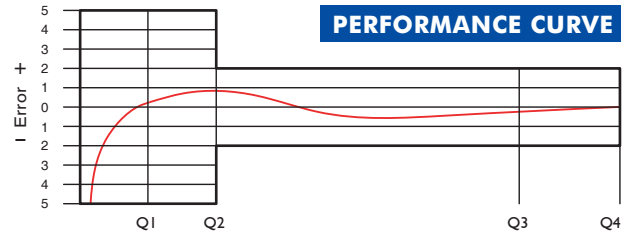
Climatic : -10°C/+55°C | Mechanic: M1/O | Elektromagnetic: E2

- Q2 ≤ Q ≤ Q4 Maximum Permissible Error
- Class 2 Water Meters; %±2 (Water Temp. ≤ 30°C), %±3 (Water Temp. > 30°C)
- Class 1 Water Meters; %±1 (Water Temp. ≤ 30°C), %±2 (Water Temp. > 30°C)
- Q1 ≤ Q < Q2 Maximum Permissible Error
- Class 2 Water Meters; % ± 5 | Class 1 Water Meters; % ± 3

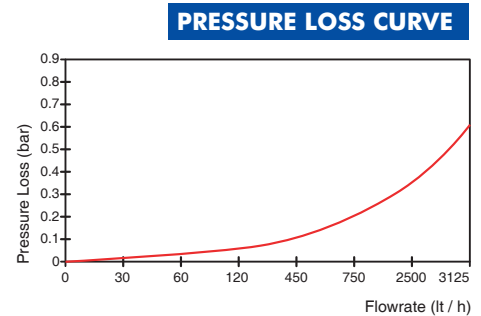


PERFORMANCE DATA

Nominal Diameter	DN	15
Overload Flowrate	Q4	m³/h 3,125
Permanent Flowrate	Q3	m³/h 2,5
Transitional Flowrate	Q2	m³/h 0,020 0,050
Minimum Flowrate	Q1	m³/h 0,0125 0,03125
Q3/Q1 (MI-001 OIML R49)	-	≤200 ≤80
Mounting on the network	-	H V
Maximum Registration Capacity	m³	99999,999
Initial Flow	Qi	l/h 7
Maximum Working Pressure	bar	16
Maximum Working Temperature	°C	50
Pressure Loss Class	bar	0,63
Smallest Reading Resolution	m³	0,00005
Class	-	Class 1/Class 2
Quantity per package	-	10



PERFORMANCE CURVE



PRESSURE LOSS CURVE

DIMENSIONS

Nominal diameter	DN	15	mm
Connecting diameter	D	G 3/4	B
Total overall meter height	H	86	mm
Axis height	h	20,6	mm
Length	L	110 115	mm
Length with connections	LB	190 195	mm
Width	B	78	mm
Unit weight		0,60	kg
Package Weight (without connect)		6,60	kg
Package Weight (with connect)		8,20	kg
Package dimensions		21x43x17	cm

