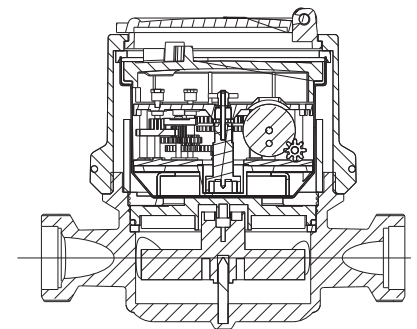


# BAYLAN

## WATER METERS

### KK-12

## Single jet Dry type Water Meter



#### GENERAL

- MID Certificated
- Single jet design assures very high sensitivity even at low flows
- Pulse output and AMR reading features are optional
- With stainless steel register cup
- Vacuum mechanism
- Electrostatic painted body made of corrosion resistant brass
- Protection against external magnetic fields
- Suitable for potable water
- Available for optical reading
- 3 years of warranty • Almost no maintenance
- Suitable for cold water up to 50°C
- Service and spare parts available for 10 years
- IP68 Protected
- Environmental Classes

Climatic : -10°C/+55°C | Mechanic: M1/O | Elektromagnetic: E2

• Q2≤Q≤Q4 Maximum Permissible Error

Class 2 Water Meters; %±2 (Water Temp.≤30°C), %±3 (Water Temp.>30°C)

Class 1 Water Meters; %±1 (Water Temp.≤30°C), %±2 (Water Temp.>30°C)

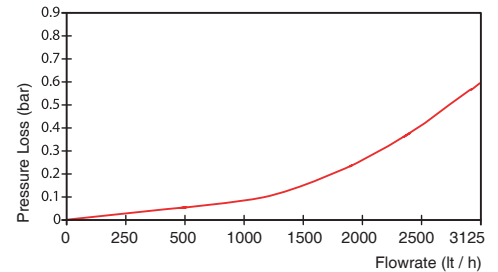
• Q1≤Q<Q2 Maximum Permissible Error

Class 2 Water Meters; % ± 5 | Class 1 Water Meters; % ± 3

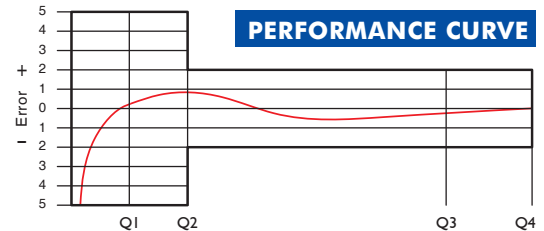
#### PERFORMANCE DATA

Overload Flowrate	Q4	m <sup>3</sup> /h	3,125
Permanent Flowrate	Q3	m <sup>3</sup> /h	2,5
Transitional Flowrate	Q2	m <sup>3</sup> /h	0,020   0,050
Minimum Flowrate	Q1	m <sup>3</sup> /h	0,0125   0,03125
Q3/Q1 (MI-001 OIML R49)	-		≤200   ≤80
Mounting on the network	-		H   V
Maximum Registration Capacity	m <sup>3</sup>		9999 / 99999 / 99999,99 / 99999,999
Initial Flow	Qi	l/h	5
Maximum Working Pressure	bar		16
Maximum Working Temperature	°C		50
Pressure Loss Class	bar		0,63
Smallest Reading Resolution	m <sup>3</sup> /h		0,00005
Class	-		Class 1/Class 2
Quantity per package	-		10
Package dimensions	cm		21x43x17

#### PRESSURE LOSS CURVE



#### PERFORMANCE CURVE



#### DIMENSIONS

Nominal diameter	DN	15	20	mm
Connecting diameter	D	G 3/4	G 1	B
Total overall meter height	H	90,5	90,5	mm
Axis height	h	18,5	18,5	mm
Length	L	110/115	110/115	mm
Width	B	81	81	mm
Length with connections	LB	190/195	190/195	mm
Unit weight		0,67	0,67	kg
Package Weight (without connections)		7,36	7,36	kg
Package Weight (with connections)		8,96	9,26	kg

